

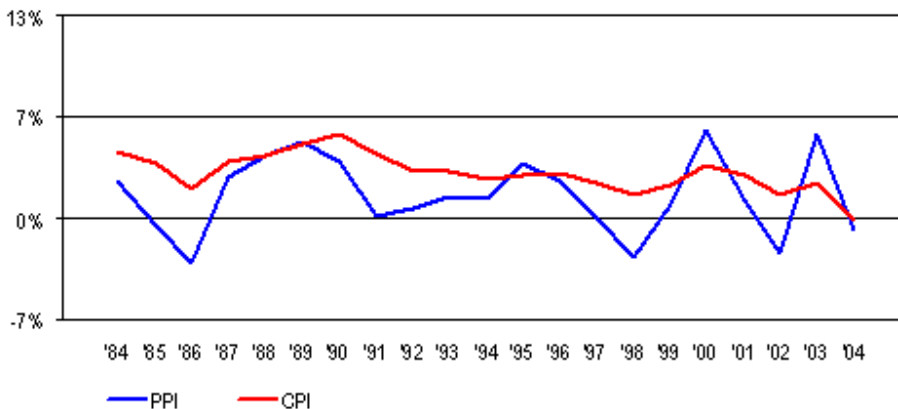
United States Inflation Rate

- ✓ Inflation, as measured by the Consumer Price Index has remained below 5% annually since 1991.
- ✓ The Producer Price Index (PPI) measures the change in the average selling prices of goods entering the market for the first time that are not sold directly to consumers.
- ✓ The Producer Price Index tends to be a leading indicator of inflation.
- ✓ The Consumer Price Index (CPI), commonly referred to as the inflation rate, is a measure of the average change in prices paid by consumers for a fixed market basket of goods and services.

Inflation Annual Change - U.S. (1984-2004)		
	PPI*	CPI**
1984	2.4%	4.3%
1985	-0.5%	3.6%
1986	-2.9%	1.9%
1987	2.6%	3.6%
1988	4.0%	4.1%
1989	5.0%	4.8%
1990	3.7%	5.4%
1991	0.2%	4.2%
1992	0.6%	3.0%
1993	1.5%	3.0%
1994	1.3%	2.6%
1995	3.6%	2.8%
1996	2.4%	3.0%
1997	-0.1%	2.3%
1998	-2.5%	1.6%
1999	0.9%	2.2%
2000	5.7%	3.4%
2001	1.1%	2.8%
2002	-2.3%	1.6%
2003	5.3%	2.3%
2004	-0.7%	-0.1%

*All Commodities portion of the Producer Price Index
 **Consumer Price Index
 Source: US Bureau of Labor Statistics, 2005.

United States Inflation (1984-2004)



Source: US Bureau of Labor Statistics 2005 and information provided by www.gpec.org.